

PENTILLIE

Castle & Estate

CORNWALL

ACCESS STATEMENT FOR PENTILLIE CASTLE

Introduction



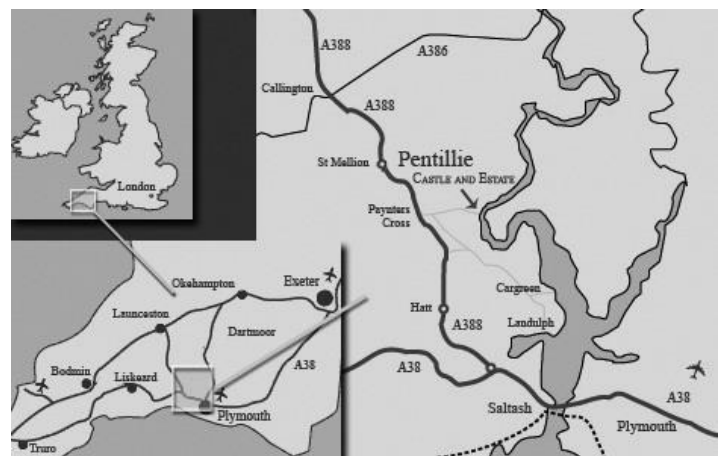
Pentillie Castle and the surrounding gardens are situated on a promontory of land high above the River Tamar. The land slopes steeply down towards the Tamar on the north, east and south. The approach driveway from Paynters Cross and the American Gardens rise above the castle to the west.

Location – Getting here

Pentillie is only 6 miles from Plymouth on the A388 between Saltash and Callington,

By Car Half way between the villages of Hatt and St Mellion look for a road sign 'Paynters Cross'. Turn off the A388 here, go around an S bend and the gates of Pentillie are in front of you.

The post code is PL12 6QD for those with a SatNav. Directions can be downloaded from our website or sent to you on booking.



By Train

Saltash.

The nearest railway station is at Saltash (15 mins) but not all trains stop there and the station is unmanned. There is quite a steep ramp leading from the westbound platform to the road and limited parking on this road.

Plymouth

We recommend that Wheelchair users and anyone requiring assistance should disembark at Plymouth (25 mins) having previously requested assistance from the train operator. It is necessary to use lifts to access some of the platforms.

PENTILLIE

Castle & Estate

CORNWALL

By Air The two airports of Exeter and Newquay are both less than an hour away – almost equidistant from Pentillie.

Taxi We can arrange local taxis, with accessibility ramps if required, to meet you at the Station or Airport. These are often cheaper than ‘black cabs’.

Bus There is a request bus service that stops on the A388 at Paynters Cross which is at the top of the drive. The walk down the drive to the castle is approximately 1 kilometre. We can provide the timetable.

Assistance

Because of the steepness of the ground surrounding the castle some areas are difficult to reach in a wheelchair or independently by those with limited mobility. Pentillie staff are available, and will guide or assist anyone in need of help.

Disabled Access to the grounds

Wheelchair access is restricted to some areas immediately surrounding the castle. There are also some steps between the terraces and in the gardens without handrails that some people may find difficult.

Parking

There is a tarmac flat car parking area large enough for 20 cars immediately in front of the castle.



Please do not park like the cars in this image, but perpendicular to the walls. This allows access to the front door in case of an emergency.

We do not reserve any specific spaces for those with disabilities. However, if you do require assistance from your vehicle, please let us know in advance by telephoning the office on 01579 350044, and we happily reserve you a space next to the castle, particularly if we are expecting a lot of cars.

PENTILLIE

Castle & Estate

CORNWALL

CASTLE



Your rooms is highlighted in orange on the above plan. The fire exits are marked in green.

A floor plan of the castle is available on the website or we can send you a copy. See figure on left.

There is a copy of this plan in the guest information folder in your room. This clearly marks your room and nearest exit points from each room.

Alarms The fire alarm is an audio visual system, and is checked weekly, usually Friday mornings. It is monitored by the fire brigade.

We have a vibrating alarm clock available for guests to borrow.

Facilities

Television There are 4k HD smart TV's in the morning room and a larger one in the Games room, Televisions with free view are in every bedroom,

Internet There is free WiFi access throughout the castle.

Phone A house phone, 01579 351184, is available for guests to use for both incoming and outgoing calls.

Entry to the Castle

All doors and openings on the ground floor are more than 3 feet wide allowing easy wheelchair access.



Front Door, West There is a small 2" step and the bottom rail of the door frame to negotiate but wooden ramps are available and will be set up whenever required.

Back Door, North This door is situated to the left of the front door and approached through a paved courtyard. Access is level with no restrictions.

Loggia Door, South This French window can be reached by following the gravel path around the lawn from the car park. There is a 2" wooden rail, but ramps are available.

PENTILLIE

Castle & Estate

CORNWALL

Terrace Access All these doors have two or three steps which are not fitted with handrails. A ramp is available for the stair hallway door.

Ground Floor Public Rooms

The ground floor is all on one level, and has no steps. All the ground floor public rooms have wide doorways (more than 3 feet) that are easily accessible by wheelchair. There is a unisex toilet suitable for use by wheelchair users.

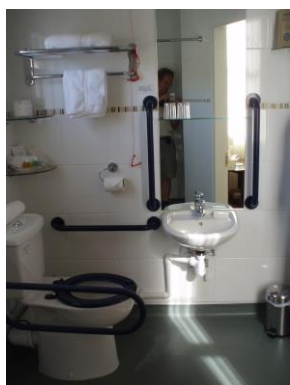
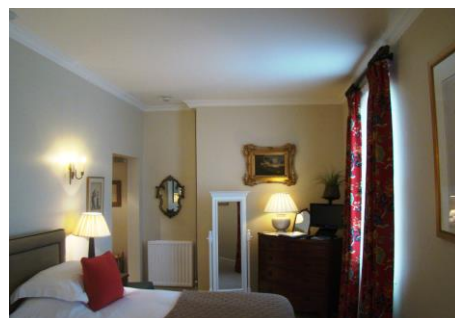


First Floor

The first floor bedrooms are only accessible by using the front and back stairs. Both sets of stairs are wide enough for two people to walk side by side. There is handrail on the left hand side (as you go up) of the main stairs, and of both sides of the back stairs. There is a third sitting area on the first floor landing (near the main stairs), with more sofas and armchairs.

Ground Floor Bedroom

There is a bedroom on the ground floor (Warren Suite) that has been designed specifically for disabled use. Our architect was an MS sufferer who used both sticks and a wheelchair on occasion. He was especially interested in making sure that this room was designed as well as possible. The room is therefore fitted out for use by anyone with limited mobility, or in a wheelchair.



The bathroom is laid out as a wet-room with a height adjustable shower and shower seat. It complies with the recommended standards.

The colour contrasts within the room also comply to the recommended standards for those with visual impairments.

The bed can be a double or two singles and can also be raised on blocks, so that a hoist can be used.

All furniture is easy to remove from the bedroom if more space is required. There are call alarms fitted in the bedroom and shower room.

PENTILLIE

Castle & Estate

CORNWALL

Bedrooms

All the bedrooms have different layouts, but are all well lit. Most bedrooms can be twin or double configuration apart from Dewhurst. All bedrooms are carpeted and comply with visual contrasting colour requirements.

All bathrooms are well-lit with non-slip laminate flooring in the bathrooms. Some have separate walk-in showers, other rooms have showers over the bath. Please tell us your preference.

The bathroom in the Dewhurst suite has four steps leading to it and a tile floor.

The baths in the Howard and Victor bedrooms have a fitted handrail and there is a bidet in the Tillie bathroom.

Pictures of bedrooms and bathrooms are available on our website <http://www.pentillie.co.uk/staying-at-pentillie/pentillie-nights>. You can select your room, all of which are named after members of the extended Coryton family.

Bedding

Beds are usually made with duvets and a mixture of feather and hypoallergenic bedding. Rooms can be entirely made up with hypoallergenic bedding, or sheets and blankets as required. Please ask.

Cellar Games Room

This subterranean room has a small billiard/snooker table, with table tennis top, a football table, a large 4k smart TV and comfortable leather armchairs and a sofa. It is normally accessible from inside the castle by a flight of concrete stairs with a handrail on one side only. However it can be entered from outside at the Tennis Lawn terrace level by a shallow ramp and only two steps. We can direct and assist you.



Office and Courtyard

The Office and Courtyard rooms, consisting of the Boot, Garden and Staff Rooms, are all accessible by wheelchair. Additionally there is a unisex, disabled toilet facility directly accessible from the courtyard.

Swimming Pool

Access to the swimming pool, adjoining the courtyard, is restricted by a narrow door and stairway and is therefore is not easily accessible by wheelchair. There are handrails on both sides. The pool is entered by wide shallow steps, or ladders.



PENTILLIE

Castle & Estate

CORNWALL

TERRACES

Upper Terrace

The upper terrace, at the same level as the ground floor of the Castle, can be accessed directly via 2 wide steps (not fitted with handrails) from the Main Stair Hall and the Dining Room. Wheelchair access is either around the castle from the car park, from the Loggia doorway, or via a portable ramp from the stair hallway.



The views from this terrace are exceptional, and are among the best that can be enjoyed from anywhere on the estate.

Middle Terrace

This is only accessible by steps from both the Upper Terrace and the Old Tennis Court Terrace – unfortunately it does not have wheelchair access.



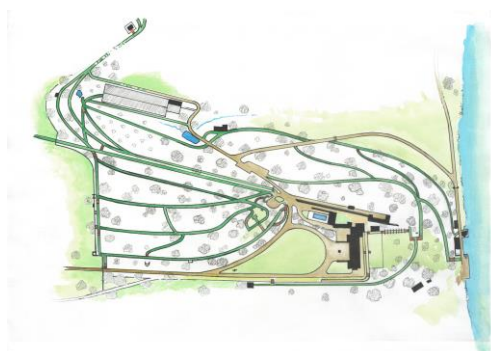
Old Tennis Court Terrace

The main access route from the Castle is down two wide flights of steps that have a parapet wall but no specific handrail. There is an alternative route for wheelchair users around the outside of the courtyard buildings following the signs to staff parking. This route can be followed by wheelchair or car. There is a wheelchair accessible toilet in the Pavilion Building at the north end of this terrace.

GARDENS

We will give you a map of the gardens on arrival or can send you a copy. We will mark the best possible route around the gardens for you, depending on your mobility and determination and possibly the 'horse-power' of your wheelchair!

Please remember that we are there to help you get around as we want you to enjoy Pentillie as much as we do.



East Garden (towards the River)

This path is relatively flat, however, there are many stepped sections. The path surface is not very even. There are a number of steps in several different flights and these do not have handrails. Sadly this

PENTILLIE

Castle & Estate

CORNWALL

lovely route is not suitable for wheelchair users or those with limited mobility. Access to the river can be obtained by car or wheelchair using the tarmac'd road (a continuation of the main drive).

American Gardens

The paths and steps in these gardens make disabled access difficult but possible. The advice and assistance from a member of the Pentillie staff should be obtained before venturing into them.

Kitchen Garden

Having not been cultivated for over 30 years, the garden rested under a blanket of weeds and brambles...until June 2012. That summer, with the help of Natural England, the walls were restored, and from there work was completed on a new Victorian-style greenhouse. The regeneration of the kitchen garden is still a work in progress although allotments are currently cultivated by estate tenants.

The kitchen garden is not suitable for anyone with limited mobility as it is set on the side of a steep hill.

Mausoleum

The Mausoleum is a fair uphill walk from the Castle but wheelchair users can get there. However, we recommend that everybody not in the first flush of youth is accompanied for this walk. There is an estate four-wheel drive vehicle available if you would prefer to make this journey in style!

The Lime Avenue, and Best Walk are both suitable for those with limited mobility. Both are spectacular, offering different elements of the garden.

The Lime Avenue does rise to a hill, but the Best Walk remains flat all the way to the orchards which are spectacular at most times of year, most notably, the spring.



In Winter 2012, restoration work begun on the Mausoleum. The walls have been re-pointed, strengthened and cleared of ivy. The crumbling castellations have been rebuilt. When stabilising the floor, William May-Somerville and his team of builders very excitingly discovered the brick floor roof of a vaulted structure. For more details on the discovery of Sir James Tillie click [here](#). Sir James' statue has since been restored by specialists. The Mausoleum's full restoration is now complete.

PENTILLIE

Castle & Estate

CORNWALL



Dogs & Service Dogs

Our resident Labradors, Khan and Tamu may well greet you on arrival, or accompany you on your walks. Please do let us know if you would prefer not to meet them.

Your dogs are welcome to sleep in any of the three following bedrooms (Howard, Kitson or Warren). Alternatively, they are welcome in our boot room which is at the far end of the Castle on the ground floor, next to our office. See castle plan map.

Dogs are welcome throughout the downstairs of the Castle (floorboards). This limited access to dogs does mean that the majority of the Castle and upstairs bedrooms can remain allergy free.

Large Print Format

All printed documents are available in large format. Please contact the office on 01579 350044 for more details.

Pentillie Castle and Estate
St Mellion
Saltash
Cornwall
PL12 6QD

contact@pentillie.co.uk
www.pentillie.co.uk