

# PENTILLIE

## *Castle & Estate*

CORNWALL



A Warm Welcome

Enjoy private hire of our beautifully appointed country house in Cornwall. Explore the acres of woodland gardens, splash in the heated outdoor swimming pool, and relax in our comfortable reception rooms.

# C O N T E N T S

Castle information . . . . .	3
Accommodation details . . . . .	4 - 7
Emergency information . . . . .	8
Things to do at Pentillie . . . . .	9
Garden map . . . . .	10
Activities & attractions nearby . . . . .	11
Places to visit . . . . .	12
Pubs, restaurants & eating out . . . . .	13 - 14
Local food & drink suppliers . . . . .	15
Recommended caterers . . . . .	16



Welcoming up to 22 guests in our 11 individually styled bedrooms with spectacular views.

Guests have use of the farmhouse style kitchen to cook their meals or dine alfresco using the BBQ with outdoor seating on the terrace overlooking the River Tamar.

Spend summer days relaxing by the outdoor solar heated swimming pool or enjoy winter nights in the Drawing Room by the large open fire.

Keep entertained in our games room with widescreen smart TV, billiards, table tennis and dartboard.

Explore the 55-acres of woodland gardens with many walks around the Estate, including paths down to the picturesque Bathing Hut on the quay, or up to Sir James Tillie's mysterious mausoleum.

## ACCOMMODATION DETAILS

**Bedroom configuration.** All first-floor bedrooms have stunning views of the River Tamar across to Devon or of the historic Castle gardens. One bedroom is located on the ground floor and has been adapted for those with limited mobility, offering a wet room style en-suite with height adjustable shower and shower seat. There are two rooms on the top floor with a small shared shower room with toilet. All rooms are super-king as standard, however the option to have rooms twinned (two single beds) is available in all rooms except Dewhurst, Coryton & Wyndham. Bayly is twinned as standard.

**Check in & out times.** To ensure the Castle is thoroughly clean and safe, we ask that guests arrive no earlier than 5pm and that every effort is made to depart no later than 10am.

**Guest details.** Prior to arrival, we ask that you complete an accommodation schedule. This ensures that we know guest numbers and ages and the layout of each room - whether twin beds, blow ups or cots are required. Further to this, guest details are an insurance and health & safety requirement in the instance of a fire.

**Children.** We are very happy to welcome children. While we don't have any family or interconnecting rooms, we are able to recommend rooms that are directly opposite one another or side by side so that parents can be near their young ones. Alternatively, we have a couple of blow-up beds and travel cots that can fit into certain rooms.

**Dogs.** There are three dog friendly bedrooms: Warren, Kitson and Howard. We charge £30 per dog to cover additional cleaning and allow up to two dogs per room - no more than four dogs in total. We also have a room located at the far end of the Castle for any dogs not sleeping in bedrooms. Please inform us prior to arrival if bringing a four-legged friend.

**Keys.** There are individual keys for each bedroom, these can be found hanging by the front door. Each key can also lock and unlock the main front and back doors. Please lock the Castle if going out for the day and at night.

**Wi-Fi.** Guests can access free super-fast Wi-Fi throughout the Castle using "Pentillie Castle" and the password "thecastle" - one word, lower case.

**Towels & toiletries.** Each room is provided with towels, dressing gown, slippers, toiletries, toilet roll and hairdryers.

**Housekeeping.** As all stays are based on a self-catered basis, housekeeping is not included. However, this can be arranged for an additional cost. Should you accidentally spill anything, you can find everything you need in the cleaning cupboard in the Boot Room at the far end of the Castle, including a mop and vacuum cleaner.

**Laundry.** There is a washing machine, tumble dryer and outdoor rotary washing line - please note that laundry detergent is not provided.

**Catering.** Should you be interested in having catering during your stay, you can find a list of recommended local chefs on page 16.

**Food delivery.** You may wish to organise a food delivery to arrive once you have checked in – Tesco, Sainsbury's, Waitrose etc. all deliver here. Alternatively, we are happy to recommend local suppliers.

**Food shops nearby.** Both Waitrose and Tesco are a 10 minute drive from the Castle.

**Kitchen cooking facilities.** The kitchen provides a large Aga with the following approx. temperatures: roasting oven (210°C) normal oven (180°C) slow cook (140°C) and plate warmer. There is also a range cooker with two large electric ovens and gas hobs.

**Kitchen equipment.** We try to leave you with everything that you might expect to find in a home such as washing up liquid, sponges, tea towels, tin foil, cling film etc. All utensils, pots, pans, and dishes. Guests also have use of two dishwashers, with a few tablets left for guest use.

**Kitchen basics.** We provide salt, pepper, sugar, sweetener, and cooking oil. We do not provide any ketchup or other condiments. There is a selection of teas, ground coffee and instant coffee. We also have a Nespresso coffee machine and supply a limited number of coffee pods - should you be likely to use this a lot, or have a particular favourite, we recommend that you order additional supplies.

**Dustbins and recycling.** Please use the kitchen bins provided to separate your rubbish, recycling, and food waste. When your kitchen bins are full, these can be taken out and emptied into the bigger bins in the fenced area opposite the swimming pool entrance. Extra bin bags can be found in the kitchen table drawer.

**Alcohol.** You are very welcome to bring and enjoy your own alcohol.

**Swimming pool.** The swimming pool is open from mid April until the end of September. It is solar heated therefore Pentillie can accept no responsibility or guarantee for the temperature thereof. All guests must sign a disclaimer before the pool can be used to ensure guest safety as it is not monitored. Children must be supervised at all times, and the door kept locked when not in use. Glass must not be used in the pool area. Pool towels are provided in each bedroom, and lounge covers can be found in the pool area, inside the cupboard.

**BBQ & outdoor fire.** We have a large gas BBQ (gas provided) with plenty of seating on the terrace. On the lower terrace by the summer house, you can find an outdoor fire pit with seating and logs.

**Wellies.** Please feel free to use any of the wellies stacked in the Boot Room at the far end of the Castle.

**Open fires.** Both the Morning and Drawing Room have open fires that you are welcome to light. Please find kindling, logs, fire lighters and matches in the basket next to the fire. We ask that you do not overload the fire with logs, and only put on a couple at a time.

**Smoking.** We do not allow any smoking within the house or pool area. Designated smoking areas with cigarette buckets can be found on the back terrace, by the front door and outside the Morning Room loggia. Please keep all doors and windows shut so that the smoke does not blow into the house.

**Visitors.** Friends can only visit you in the property with prior written agreement and provided there is a member of staff on site. Should you wish to invite a number of additional guests, this would be classed as a "Party" with additional costs applicable. Outside guests are not permitted to stay overnight. This is an insurance and health and safety stipulation and is non-negotiable.

**Staff.** Our office is located at the far end of the Castle and a member of the team is usually here between 9am-5pm each day. Outside of these hours there is someone that lives in a self-contained apartment on the estate, should you have any problems they are here to help.

**Breakages.** Please notify us of any breakages or damage so that we can replace and repair accordingly, ensuring the house is fully equipped and ready for our next guests. We understand that accidents happen, and we will not look to seek compensation for minor damage but ask that anything outside of normal wear and tear is paid for.

**Directions.** Pentillie is approx. 8 miles from Plymouth, situated on the banks of the River Tamar. It is approx. 4½ hour drive, or 3½ hour train journey from West London. We also have our own private helicopter landing area where guests can land by prior arrangements.

**Parking.** There is plenty of parking at the front of the Castle. Please park cars facing the two side walls of the courtyard and not facing the Castle.

*Additional services such as catering, housekeeping or a butler service can be arranged in advance of your stay. Please note that we will generally require you to contact us with at least seven days' notice to investigate additional services for you and we cannot guarantee that a service will be available.*

# EMERGENCY INFORMATION

General emergency: 999

Postcode for emergencies: PL12 6QD

## Medical

NHS emergency: 111

Nearest doctors: Saltash Health Centre, PL12 6DL // 01752 842 281

Nearest minor injuries unit: Liskeard, PL14 3XD // 01579 335 500

Nearest hospital: Derriford Hospital, Plymouth, PL6 8DH // 01752 202 082

Nearest pharmacy: Tamar pharmacy, PL12 6AF // 01752 842 606

## Dentist

Dental Helpline // 03334 050 290

Plymouth Dental Access Centre, PL4 8NF // 01752 434 664

**Fire Safety.** When lighting any of the house fires or the outside fire pit, we ask that you are careful not to overload with logs, and only put on a couple at a time.

**If you discover a fire.** Raise the alarm by shouting 'fire' and pressing the nearest red alarm button. These buttons are at the top of the stairs and at the main exit points. Then proceed as below;

**If you hear the fire alarm.** Leave the building by the shortest route closing as many doors and windows as possible. Exit routes are marked with green signs. Then proceed as follows;

Assemble on the main lawn outside the front door. A roll call will be taken to check that everyone has evacuated the building. Do not re-enter the building until it is declared safe to do so by the fire brigade or house manager.

## To contact a member of the team

The Pentillie Office is open daily between 9am-5pm.

Outside of these hours, please call us directly:

Helena - in the apartment alongside the Castle - 07757 289 622

Sammie - lives 5 minutes away - 07974 143 344

Ted - lives 5 minutes away - 07768 650 750





## THINGS TO DO AT PENTILLIE

**Go for a walk...** enjoy a stroll through the woodland gardens.

**Pack a picnic...** take in the magnificent landscape across to Devon.

**Watch for wildlife...** spot pheasants, deer, peacocks and more!

**Bring your bikes...** and cycle the tracks and paths.

**Forage for goodies...** take a guided tour around the estate with Joanna, [Incredible Edible UK](#) and discover a variety of treats.

**Dine alfresco...** use the BBQ or fire pit and enjoy the country views.

**Go clay pigeon shooting...** fine tune your skills with camaraderie and good humour. Available from April - June. From £75 per gun.

**Arrange an archery session...** challenge yourself whilst having fun with Nick, [Lone Wolf Archery](#).

**Team up for a treasure hunt...** great outdoor fun for all ages.

**Enjoy gin or wine tasting...** have a taster session with [Trevethan Distillery](#) or [Le Vignoble](#).

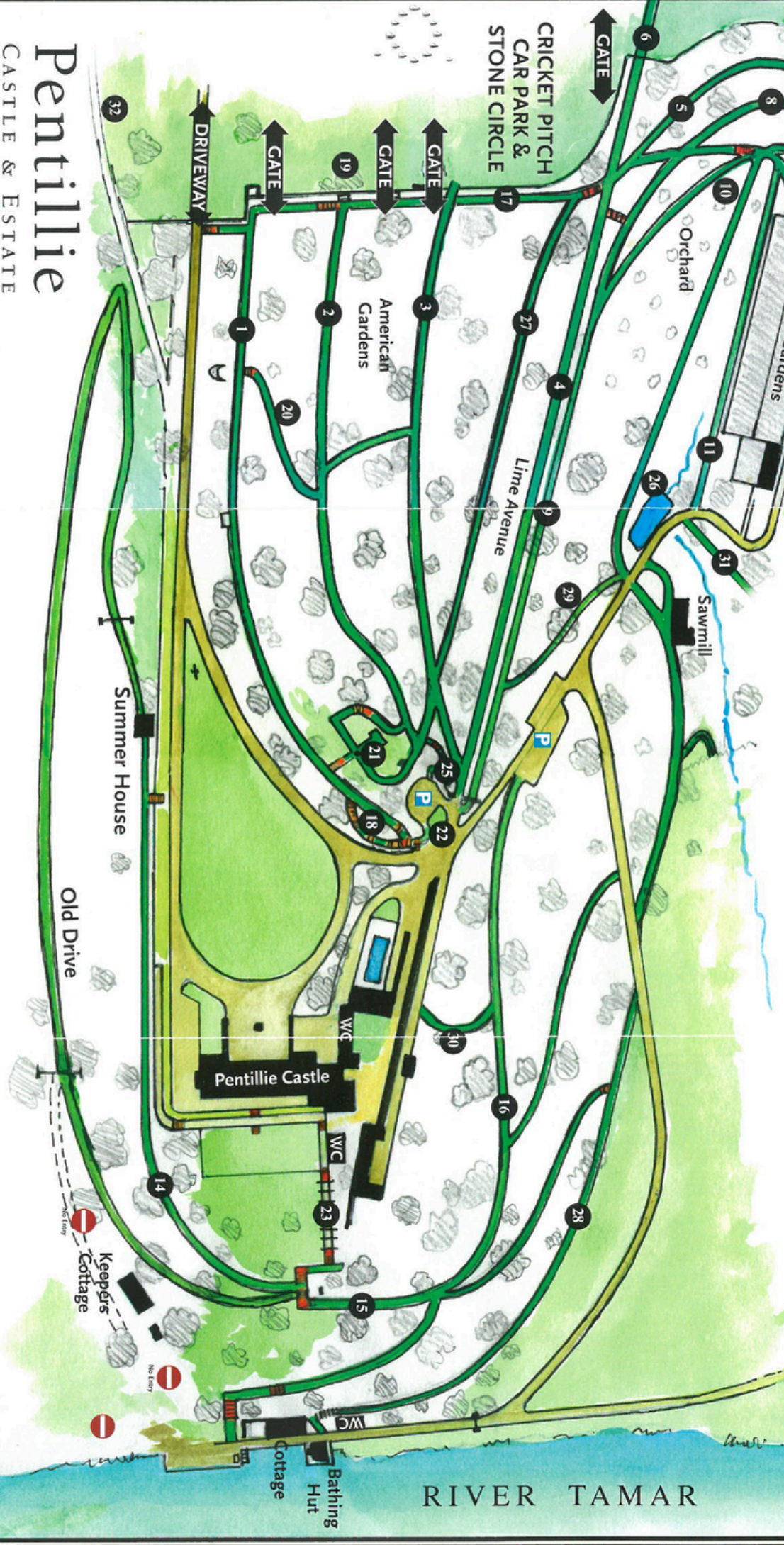
**Go stand up paddle boarding...** explore the River Tamar from the Pentillie quay with Mel, [Mai Adventures](#).

**Take a cruise...** discover the coast with [Plymouth Boat Trips](#) or the [Tamar Barge Lynher](#).



1. Rookery Path
  2. Summer House Path
  3. Deer Track\*
  4. Lime Avenue\*
  5. Buttery Walk\*
  6. Carriage Drive
  7. Track to Mausoleum\*
  8. Water Adit Path
  9. Best Walk\*
  10. Filbert Copse\*
  11. Peach Walk\*
  12. Bell Door Path
  13. Back Lane\*
  14. Courtiers Walk
  15. Quay Walk
  16. Ernie Jane's Walk
  17. Old Folly Walk
  18. Repton's Walk
  19. Wise Old Owls
  20. Thatched Summer House
  21. Sundial & Eight Beds
  22. Cherry Pie
  23. Wisteria Walk
  24. Buttery
  25. Fernery
  26. Sawmill Pond
  27. Well Path
  28. Chauffeurs Walk
  29. Dukes Path
  30. Majors Walk
  31. Sequoia Valley
  32. Bone Walk
  33. Mausoleum
- \* Accessible Routes
- P** Car Parks

**Please take care:**  
 The paths are not even, the steps can be slippery (and do not have handrails) and some slopes are steep. Children **MUST** be supervised at all times, especially near water and on the terraces.



# Pentillie

CASTLE & ESTATE

RIVER TAMAR

## ACTIVITIES & ATTRACTIONS NEARBY

Looking to make your holiday even more memorable this year?

**The Devon Concierge Club** specialise in bespoke arrangements for busy people, working in partnership with a selection of the very best businesses across the South West. Simply contact them with ideas of what you would like to do, and they'll create a tailored experience that aligns with your holiday aspirations!

**Hiking, Biking and Tree Climbling Adventures...** take a tree-top challenge with zip-wire ride at Tamar Trails.

**Adrenaline Quarry...** with a range of activities available from Go Karting to Axe Throwing and "Wipe Out" style Aqua Park!

**Canoe trips...** go into the wilds up river with Canoe Tamar.

**Cycle paths...** explore the Plymbridge or Camel Trail cycle paths.

**Fishing...** enjoy sea fishing in Looe, sea trout and salmon river fishing at the Arundell Arms, trout fishing at Sibleyback Lake or visit the put and take lake near Dartmoor.

**Horse riding...** visit Lower Tokenbury riding school, suitable for all ages and levels of experience.

**Golf...** the internationally acclaimed Nicklaus Championship course at St.Mellion is a 5 min drive. The China Fleet is a 10 min drive, and the moorland courses of Yelverton and Elfordleigh within half an hour. Coastal courses include Whitsand, St.Enodoc and Trevoze, varying from 30 min to 1 hour away.

**Adventure golf...** if looking for something to entertain the kids, Paradise Island Golf is based in Plymouth and Woodland Adventure Golf is at the China Fleet.

**Activity farms...** both Pennywell and Trethorne Leisure offer soft play activities and lots of animals.

**Spa days...** Gaia Spa at Boringdon Hall offers complete luxury and has a range of day packages and treatments on offer. The Greenhouse Spa have a family run retreat just down the road.

## PLACES TO VISIT NEARBY

**Beaches, surf schools, sea-SUP'ing and coasteering...** there are a number of beaches nearby, the closest being Whitsand Bay, a 30 min drive offering miles of coastline . Here you can find Adventure Bay, organising surf lessons, paddleboarding and coasteering. If happy to travel a bit further, you can find surf schools in Newquay or Polzeath, around 1 hour away.

**Plymouth Hoe & Barbican...** a mix of shops, historic sites and restaurants, the Hoe and Barbican are a 30 min drive from Pentillie and are home to the Plymouth Gin Distillery, offering tours and a restaurant, Barbican Kitchen owned by the Tanner brothers. Download the Plymouth Trails app for guided walks.

**Plymouth's Royal William Yard...** located on the waterfront, the Grade 1 former Royal Naval victualling buildings are filled with cafes, bars and restaurants.

**National Trust...** visit Cotehele, a short 10 min drive where you can explore their estate or walk through and along the river to the village of Calstock. Lanhydrock in Bodmin, is a 30 min drive. Saltram in Plymouth, is a 30 min drive. Antony House, in Torpoint is a 30 min drive.

**Gardens...** take a trip to the restored hidden botanical, Lost Gardens of Heligan near St Austell or Mount Edgcumbe near the Rame Peninsula, offering views across Plymouth Sound.

**Fishing villages...** further along the Rame Peninsula, you can find the small villages of Kingsand and Cawsand side by side. There is also an opportunity to catch the ferry across to Plymouth's Royal William Yard. Further south, Looe & Polperro are two lovely villages quite close to each other, easy to reach and both provide boat trips around the coastline.

**Wet weather activities...** explore The Eden Project in St Austell and its two huge domes of Tropical, and Mediterranean plant life or Plymouth Aquarium on the Barbican, home to Europe's deepest shark tank!

With a number of activities to enjoy both on the estate and nearby, there's plenty to explore and excitement to be had!

## PUBS, RESTAURANTS & EATING OUT

Crocadon, St Mellion, PL12 4RL (7 mins)

Soil-centric food and farming, menus led by the produce grown & reared on the land. Open for dinner Thursday, Friday & Saturday evenings. Lunch on Sunday. Private dining experiences available, contact via email: [info@crocadon.farm](mailto:info@crocadon.farm)

The Cornish Arms, Tavistock, PL19 8AN (30 mins) // 01822 612 145

A multi-award winning gastro-pub using classic combinations and the finest ingredients with big hearty flavours.

The Horn of Plenty, Gunnislake, PL19 8JD (25 mins) // 01822 832 528

Fine dining restaurant with 3 AA Rosettes, and a passion for local produce.

The Fig Tree @ 36, Plymouth, PL1 3RU (35 mins) // 01752 253 247

Local, award winning food in a relaxed environment.

The Bay, Cawsand, PL10 1PG (40 mins) // 01752 823 777

Set in the historic smugglers bay, enjoy fine dining and seaside charm.

The Sardine Factory, Looe, PL13 2BX (30 mins) // 01503 770 262

Modern coastal cuisine in the historic fishing port of Looe.

Kuku, Plymouth, PL1 2EU (35 mins) // 01752 255 579

Sushi Bar and Robata offering delicious contemporary Japanese Cuisine.

Fletchers, Plymouth, PL1 2EX (35 mins) // 01752 201 523

A family run business that offers a relaxed fine dining experience.

The Royal William Yard, Plymouth, PL1 3RP (35 mins)

Beautifully restored Grade I listed ex-naval victualling yard on the water's edge, connected to Plymouth Barbican and the Mount Edgcumbe estate by ferries.

Restaurants in this space include;

Bistrot Pierre. Provincial French cooking served in a friendly environment.

Le Vignoble. Wine merchant, lounge & tasting venue.

Pho. Specialising in healthy Vietnamese cuisine.

Hub. Bar, grill, seafood. Bringing a taste of Cornwall to Plymouth.

Seco Lounge. A great selection of classic and stylish dishes.

Wagamama. Modern Japanese menu, enjoy a quick bite or delicious dinner.

Wildwood. Offering a wide grill and pizza selection in a warm setting.

The Hook & Line. Fresh seafood dishes, cocktails and speciality rums.

The Shack. Takeaway treats and home to South West SUP specialists.

## **LOCAL PUBS & BARS**

Rod & Line, Tideford, PL12 5HW (15 mins) // 01752 851 912

A favourite 'spit and sawdust' pub, great seafood.

The Rifle Volunteer, Gunnislake, PL18 9HL (15 mins) // 01822 851 551

Warm and welcoming village pub.

The Crooked Inn, Trematon, PL12 4RZ (10 mins) // 01752 848 177

Family run traditional country pub.

The Who'd have Thought It, St Dominick, PL12 6TG (10 mins) // 01579 350 214

Classic pub dishes with countryside views.

The Tamar Inn, Calstock, PL18 9QA (20 mins) // 01822 832 487

Traditional pub food, situated on the River Tamar.

The Elephant Bar, Port Eliot Estate, St Germans, PL12 5ND (15 mins)

A boutique bar selling good quality ales and cocktails, fine Wines and spirits.

## **CAFÉS & LIGHT BITES**

Crocadon Cafe, St Mellion, PL12 4RL (7 mins)

Cafe and market garden - farming, growing, and cooking seasonal produce.

The Stables, Port Eliot Estate, St Germans, PL12 5ND (15 mins)

Flavour and global influences inspire individual dishes and shared platters.

Tre, Pol & Pen, Lezant, PL15 9NN (20 mins) // 01566 706 527

Cornish farm shop & kitchen rooted in the Tamar Valley.

Inkies Smoke House, Golitha Falls, PL14 6RX (30 mins) // 07849 488 655

Authentic pit smoked BBQ joint. Open for brunch & lunch.

Duchy Of Cornwall Nursery, Lostwithiel, PL22 0HW (35 mins) // 01208 872 668

Plant nursery, café and shop. Delicious, seasonal breakfasts & lunches.

## LOCAL FOOD & DRINK SUPPLIERS

### Meat

Tamar Valley Meats, Saltash, PL12 6PH // 01752 847 666

Philip Warren, Launceston, PL15 7ED // 01566 772 089

Trehill Farm Produce, St Dominick, PL12 6SQ // 01579 350 410

### Seafood

Nippers, Looe, PL13 1DX // 07572 365 516

Moby Nicks, Plymouth, PL4 0LH // 01752 266 610

### Take Out

Red Panda Chinese, Callington, PL17 7AD // 01579 383 373

Calli Pizza Cafe, Callington, PL17 7AD // 07861 312 661

Balti King Indian, Callington, PL17 7BE // 01579 383 818

The Blue Chip, Callington, PL17 7AD // 01579 384 999

### Booze

Trevethan Distillery, Saltash, PL12 6LD // 07967 401 830

Le Vignoble, Plymouth, PL1 3RP // 01752 222 892

### Fruit & Vegetables

Martin Holmes Farm Delivery, Saltash // 01752 843 753

Good Earth Growers, St Mellion // 07701 098 777

### Cornish treats...

If exploring the local lanes, why not stop off at one of the many wonderful stalls and pick up some fresh eggs, delicious berries from Mr Veale (01579 350 974) or beautiful flowers. Head to St Dominic, Cotehele or Landulph.

Visit one of the many National Trust properties for a delicious cream tea.

Take a trip to the quaint fishing village of Looe or Plymouth's Barbican for a good fish and chippy. For somewhere closer, try The Blue Chip in Callington.

Enjoy a pasty from a local baker. We recommend Helluva Pasties and Bakers Cornish Bakehouse. Available cooked or frozen, for collection or delivery.

## RECOMMENDED CATERERS

Whether you're looking for a casual brunch or a formal dinner, we've handpicked some of the best local caterers and private chefs around, allowing you to sit back and relax, while they take care of your every need.

Inspired by West Country produce and the changing seasons, they take great pride in serving delicious and beautifully presented dishes.

With their expertise and passion for food, our recommended caterers will work with you to create a bespoke menu that suits your tastes and preferences, creating an unforgettable dining experience.

### Outside Inn Cuisine

07545 805 297 // [outsideinncuisine@gmail.com](mailto:outsideinncuisine@gmail.com)

### Divine Dining

07756 035 265 // [enquiries-divinedining@outlook.com](mailto:enquiries-divinedining@outlook.com)

### The Plot

07717 209 509 // [info@theplotcatering.co.uk](mailto:info@theplotcatering.co.uk)

### White Radish Events

01736 732 711 // [info@whiteradishevents.co.uk](mailto:info@whiteradishevents.co.uk)

### Beautiful and the Feast

[justask@beautifulandthefeast.com](mailto:justask@beautifulandthefeast.com)

### Fiona Were

07470 417466 // [cheffionanz@gmail.com](mailto:cheffionanz@gmail.com)

### Janet Neale

07801 497125 // [janetneale@aol.com](mailto:janetneale@aol.com)